



300 bar 4500 PSI Oilless HPA compressor
SKU: BA-HPA-COMP

USER MANUAL

Contents

Parts Included	Page 3
Main Specification	Page 3
Operating View	Page 4
Assembly Instructions	Page 5-6
Routine Maintenance	Page 7-8
Assembly	Page 9
Structure View	Page 10



WARNING

DO NOT OVERFILL AIR CYLINDERS !

THIS CAN CAUSE SERIOUS INJURY OR DEATH . NEVER ATTEMPT TO SET THE OUTPUT PRESSURE / AUTO SHUT OFF ABOVE 4500 PSI / 300 BAR.



DANGER

DANGER OF EXPLOSION !

Overfilled compressed air cylinder

This compressor can maximum fill up to 4500psi / 300bar, but NEVER exceed max. fill pressure of your cylinder , airgun or other airsoft products. This compressor has auto shut off and overload protection, but you must always pay attention to prevent overload during working.



CAUTION

DO NOT DISASSEMBLE THE MACHINE WITHOUT PROFESSIONAL GUIDANCE

YOUR DISASSEMBLE MAYLEAD TO DAMAGE TO THE MACHINE AND IT WILL NOT WORK PROPERLY.

Parts Included

- 12v car battery wire
- 220v cable wire
- High pressure hose with air filter
- O-ring spare kits

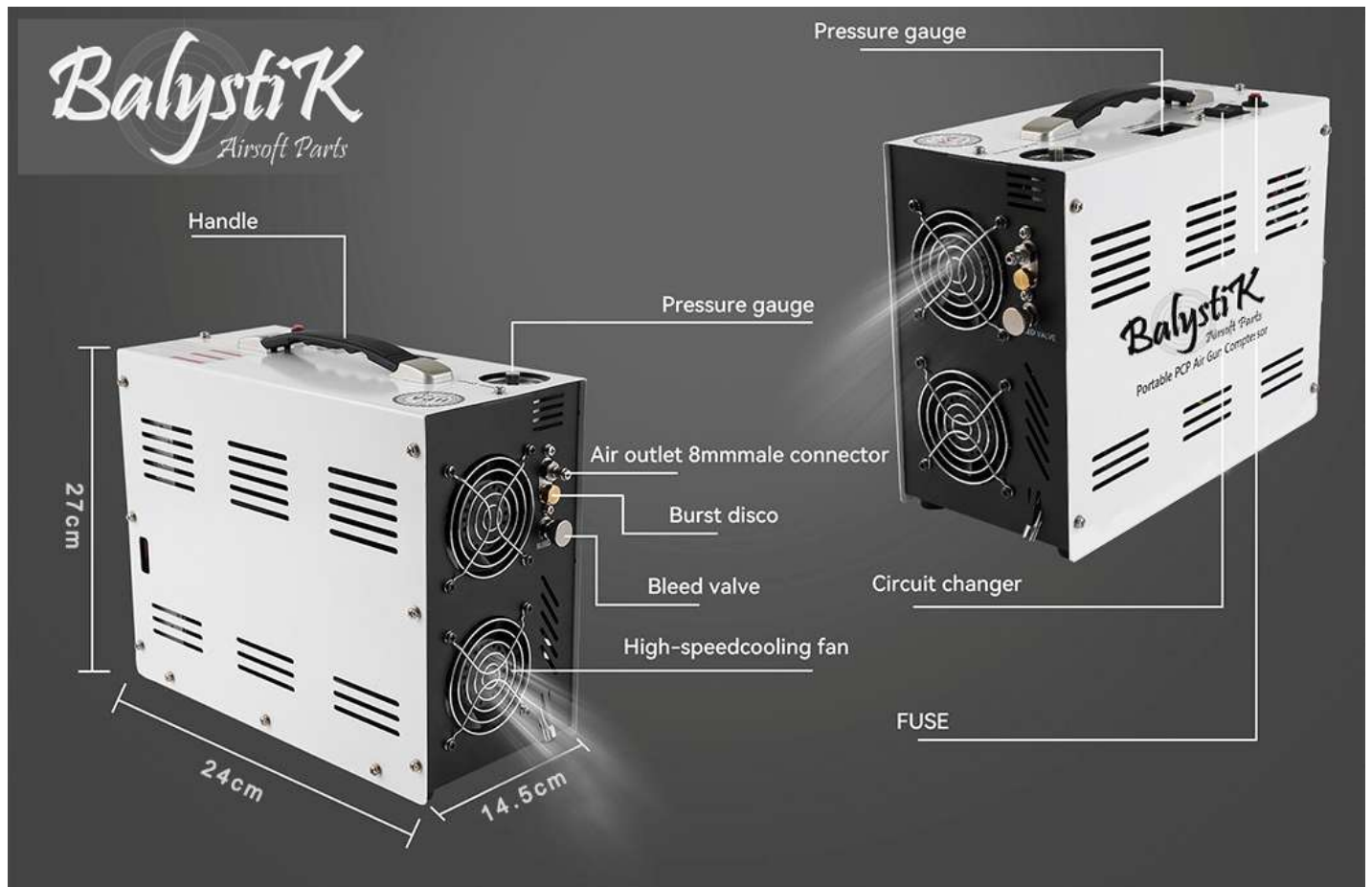


Main Specifications

Item Name	Portair TM Super 12v pcp compressor
Working Voltage	DC 12V car battery/AC 110V/220V
Max Working Pressure	300 Bar (4500psi)
RMS Power	350 Watt
Air Flow	12L/Min
Filling Speed	0-300 Bar, Approx 13 minutes (500cc)
Cooling	Air Fan Cooling
Max. Temperature	80°C
Auto Shut off	Every 30 Minutes Working Time
Net Weight	8.9 KGS
Dimensions	340x270x170mm (LxWxH)



Operating View





BalystiK
Airsoft Parts

Assembly Instructions

- 1) Connect the quick female coupler to your Airgun cylinder, Air Bottle or Airsoft products.



- 2) Connect another end foster to the output on the front of compressor via a male fitting. Make sure the foster coupling.



- 3) Connect the supplied AC power cord to the right-hand side of the main unit and connect the three-pin plug to the mains power outlet.



- 4) Manually rotate the needle of the automatic shut-off system to the pressure. NEVER overfill the maximum pressure of your cylinder and airgun



- 5) The compressor fan turns on by itself to start for cooling.



ATTENTION! Always run the fan cooling first before starting compressor.

- 6) Close the air bleed valve on the front of the main unit by turning it clockwise. It need only be finger tight.



Assembly Instructions

7) Finally, press the POWER button on the top of the main unit. The compressor unit will audibly start up and the charging process will begin.

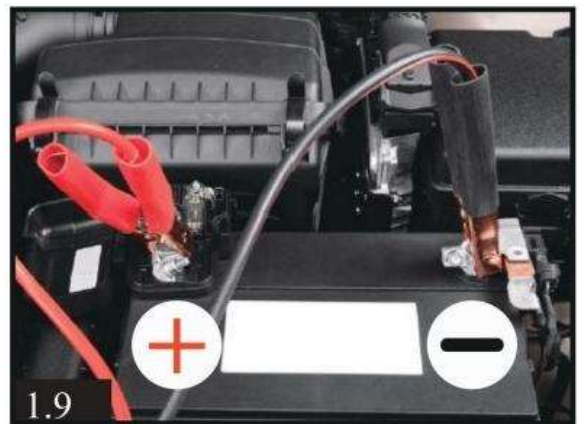


Using DC 12V Car Battery Power

Insure the car engine is running. Connect the supplied DC power cable to the right side of the 12v socket.



Connect the red clip at the other end of this cable to the positive (+) terminal of the car's 12-volt battery. Then connect the black clip to the battery's negative (-) terminal.



If the working temperature exceeds 80 degrees Celsius, the compressor **MUST** be manually switched off, you can press the POWER button to make the compressor stop working. Keep the cooling fan left running. Restart the compressor function once the compressor has cooled down. The compressor will be auto shut off every 30 minutes to prevent overloading and overheating. You can restart the compressor by pressing the POWER button again if air filling is not finished.

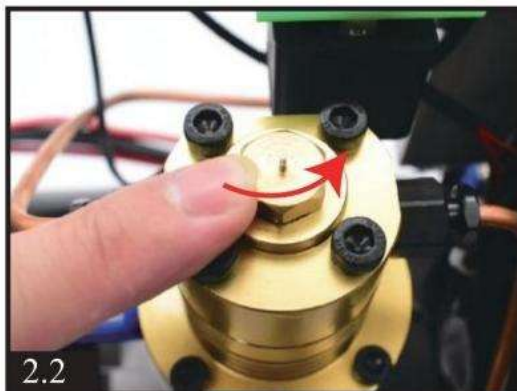
Routine Maintenance

We suggest you can do maintenance by changing O-rings and clearing dirt every 50 pieces 500cc bottlefilling or cumulative working 50 hours. Insure all power is disconnected before maintenance!

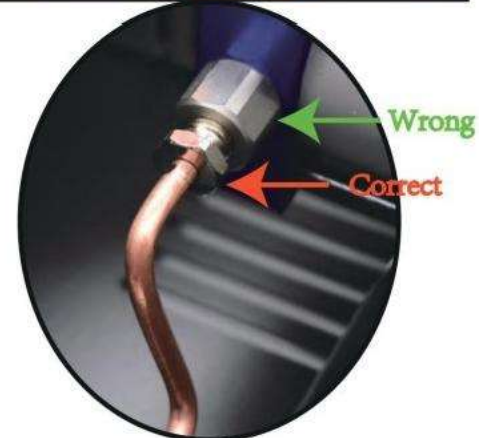
- 1) Loosen all 20 pieces screw on the cabinet. (9 pieces on front, 9 pieces on rear and 2 pieces on top). Pick up the whole metal cabinet carefully and slowly. Be careful the internal wires.



- 2) Loosen the one-way valve (check valve) to see if oring or spring damaged. Clean all dirt and assembly it back, which need to be tightened a bit.



- 3) Loosen the 2 pieces of screws of condensation tube.

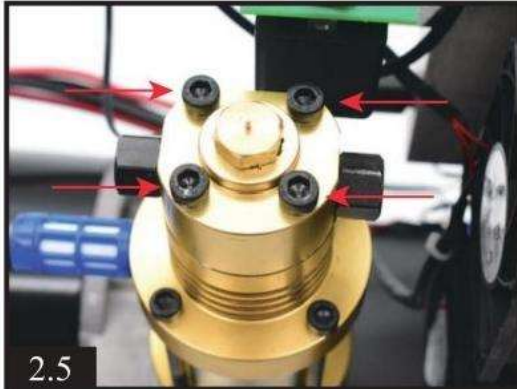


- 4) Loosen another 2 pieces of screws of condensation tube on the other side.

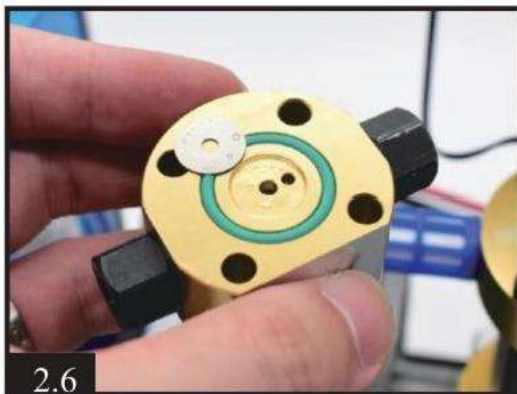


Routine Maintenance

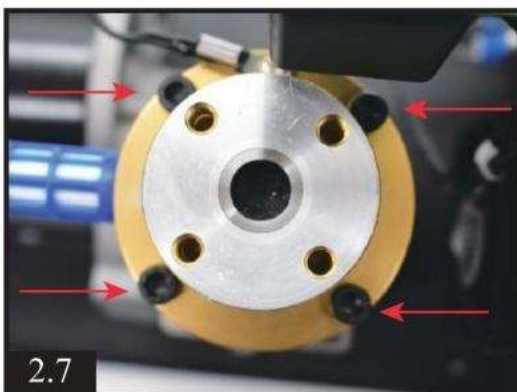
- 5) Loosen the 4 pieces screws on the high- pressure cylinder.



- 6) Take a look if the oring and metal gasket damaged, clean all dirt.



- 7) Loosen the 4 pieces screws on the low- pressure cylinder.



- 8) Take off the low-pressure cylinder, check high-pressure piston is any damaged. You can add a little silicone or motor oil on piston oring.



- 9) Take off the column metal part, clean dirt inside and check the low-pressure orings if any damaged. You can add a little silicone or motor oil on piston oring.



It is normal if you find the light gray O-ring disconnected.

Assembly

Setting the piston into the column metal part. Keep the bottom of the piston flush with the column part. Make sure there are no gaps between each parts.



- 1) Setting the low-pressure cylinder into the high-pressure piston.



- 2) Tighten 4 black screws.



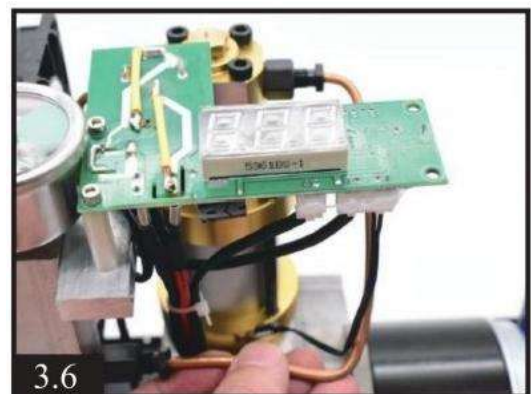
- 3) Setting the high-pressure cylinder into the low-pressure piston. And tighten the 4 screws.



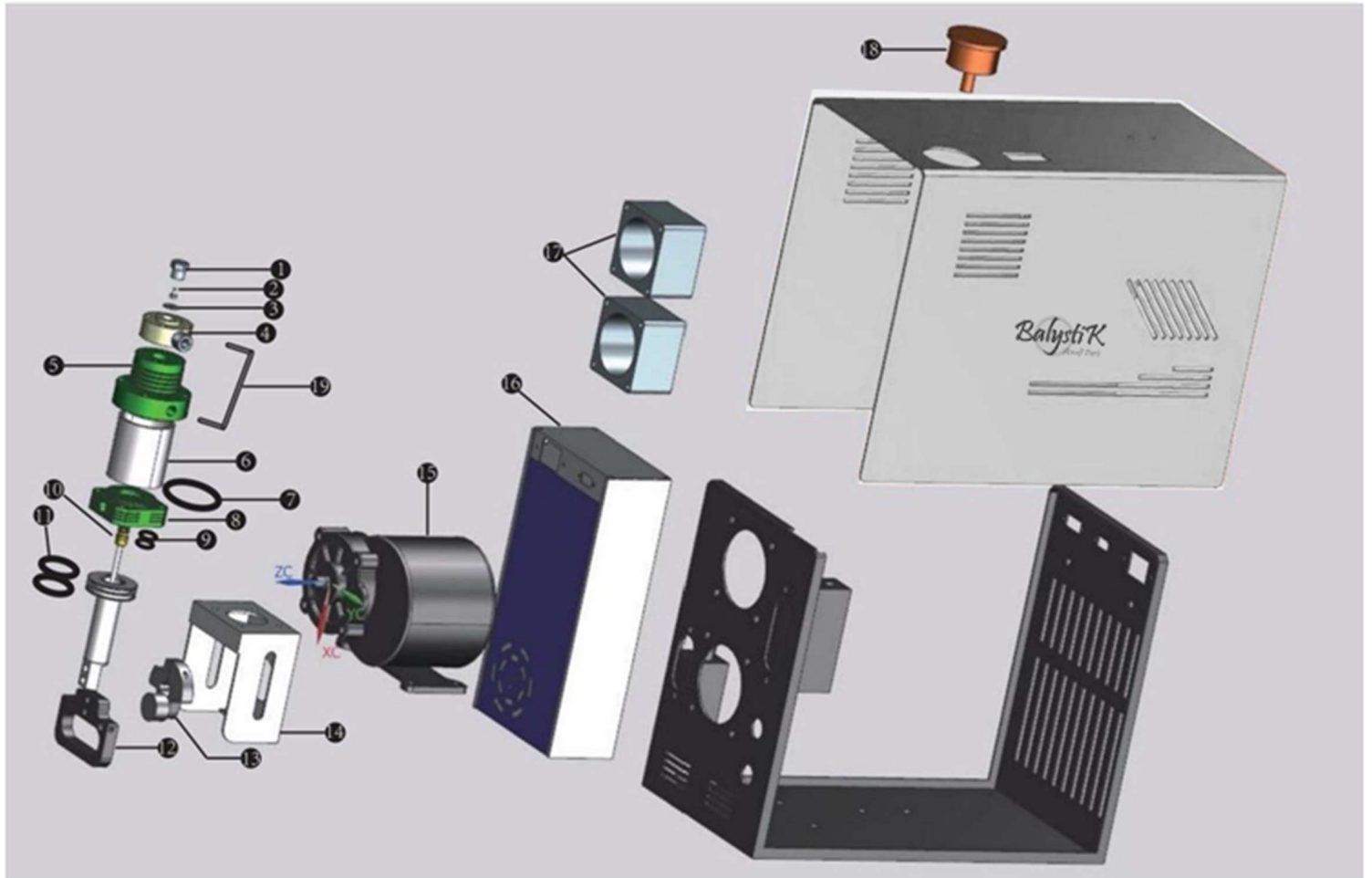
- 4) Install condensation tube on cylinder.



- 5) Install another condensation tube.



Structure View



1 One-way Screws

2 One-way Spring

3 One-way Gasket

4 High-pressure cylinder

5 Low-pressure cylinder

6 Column Part

7 High-pressure O-ring

8 Low-pressure Cylinder

9 High-pressure Piston Ring

10 High-pressure Piston

11 High-pressure Piston Ring

12 Rod

13 Crankshaft

14 Motor cover

15 Motor

16 Transformer

17 Cooling Fan

18 Manometer

19 Condensation Tube

Thanks for choosing us !



Importateur : Balystik
11 rue des artisans
31140 Pechbonnieu
FRANCE